



| | |
|--------------------------|--------------------------------|
| Beds | 1 |
| Baths | 1 |
| Reception rooms | 1 |
| Status | Leasehold |
| Tenure | For Sale |
| Energy efficiency rating | D |
| Energy efficiency | Current: 61.0, potential: 71.0 |
| Environmental impact | Current: 59.0, potential: 73.0 |

Features

PRICED TO SELL

TENURE – Leasehold

LEASE LENGTH – 135 years remaining

COUNCIL TAX BAND – A

EPC RATING – D (POTENTIAL - C)

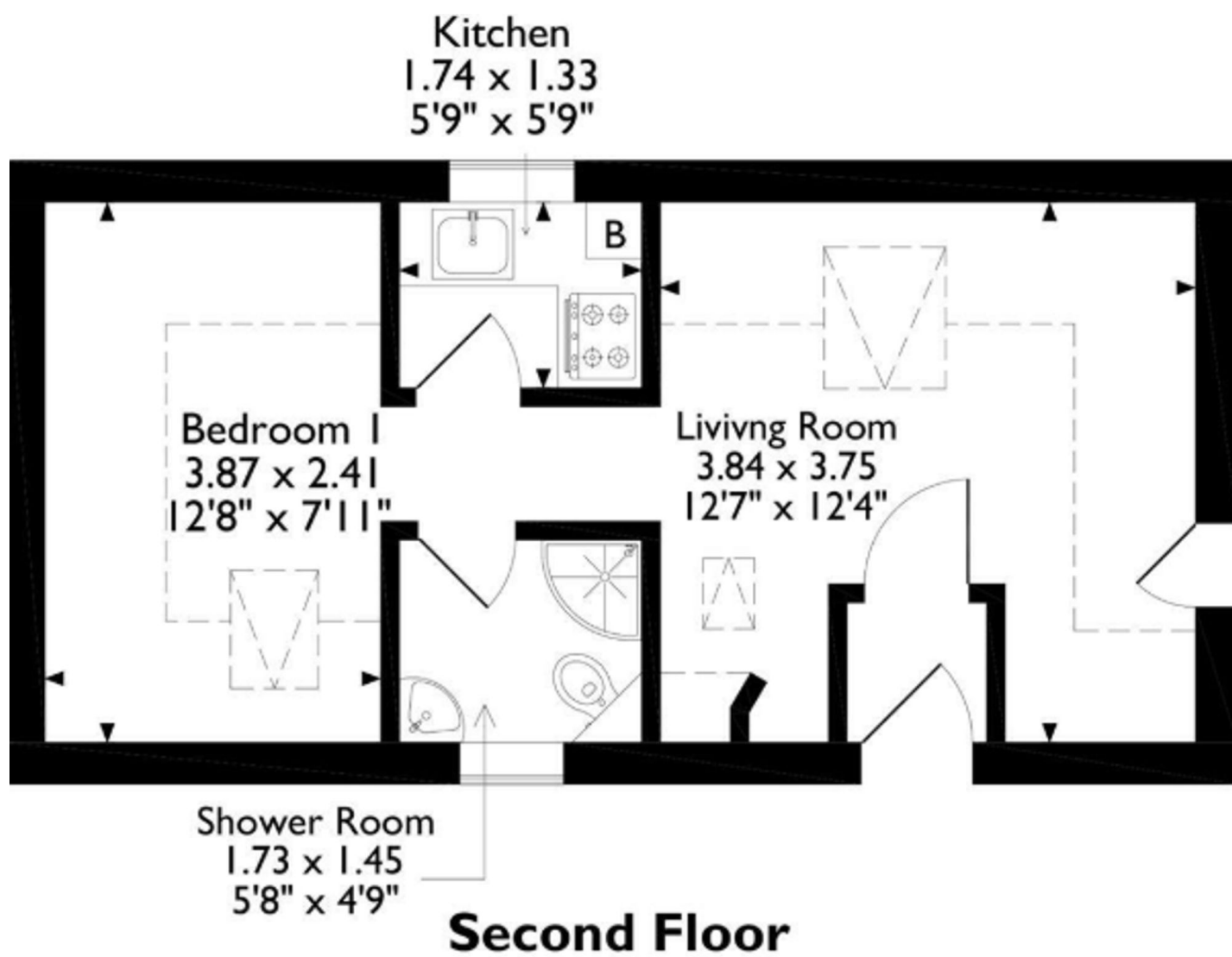
GROUND RENT - £0

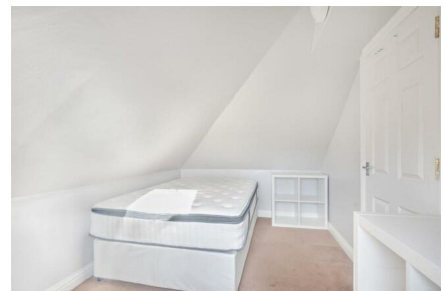
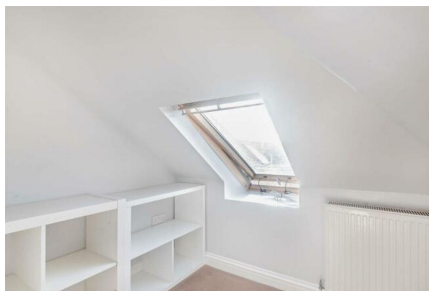
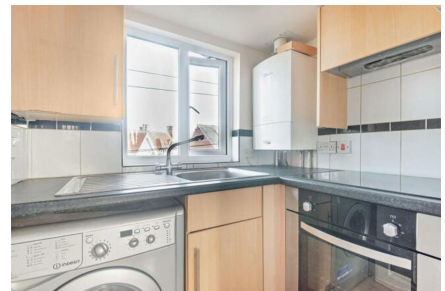
SERVICE CHARGE - £200pa

PRICED TO SELL TENURE – Leasehold LEASE LENGTH – 135 years remaining COUNCIL TAX BAND – A EPC RATING – D (POTENTIAL - C) GROUND RENT - £0 SERVICE CHARGE - £200pa (buildings insurance) We're pleased to be marketing this attractive, one bedroom flat located in the popular area of Lymington, which is a Georgian market town in the New Forest and and is situated close to major transportation links such...

View full description at <https://www.moveplaces.co.uk/properties-for-sale/1d091715-f7e6-41dd-8b5e-2e2ccdf13b04>

Floor plans





View full details at <https://www.moveplaces.co.uk/properties-for-sale/1d091715-f7e6-41dd-8b5e-2e2ccdf13b04>