



Property details	
Beds	3
Baths	1
Parking spaces	1
Reception rooms	2
Gardens	1
Status	Freehold
Tenure	For Sale
Energy efficiency rating	D
Energy efficiency	Current: 65.0, potential: 80.0
Environmental impact	Current: 63.0, potential: 78.0
Investment returns	
Current monthly rent	£594 pcm
Current rental yield	5.7%
Potential market value rent	£806 pcm
Potential rental yield	7.7%
Estimated monthly capital appreciation	-£299
Area capital appreciation rate	-2.3%
Market dynamics	
Market velocity	Slow moving
Average days on market	113
Monthly stock turnover	27%
5-year net area growth	+10.3%

Features

BUY TO LET INVESTORS ONLY – SOLD WITH TENANTS IN SITU

CURRENT RENT £725 pcm = 7.90% GROSS YIELD pa

TENANTS IN SITU SINCE – 2017-CONTRACT PERIODIC

DOWNSTAIRS FAMILY BATHROOM

TENURE – Freehold

COUNCIL TAX BAND – A

EPC RATING – D (POTENTIAL - C)

Spacious Kitchen/Diner

Separate Utility Room

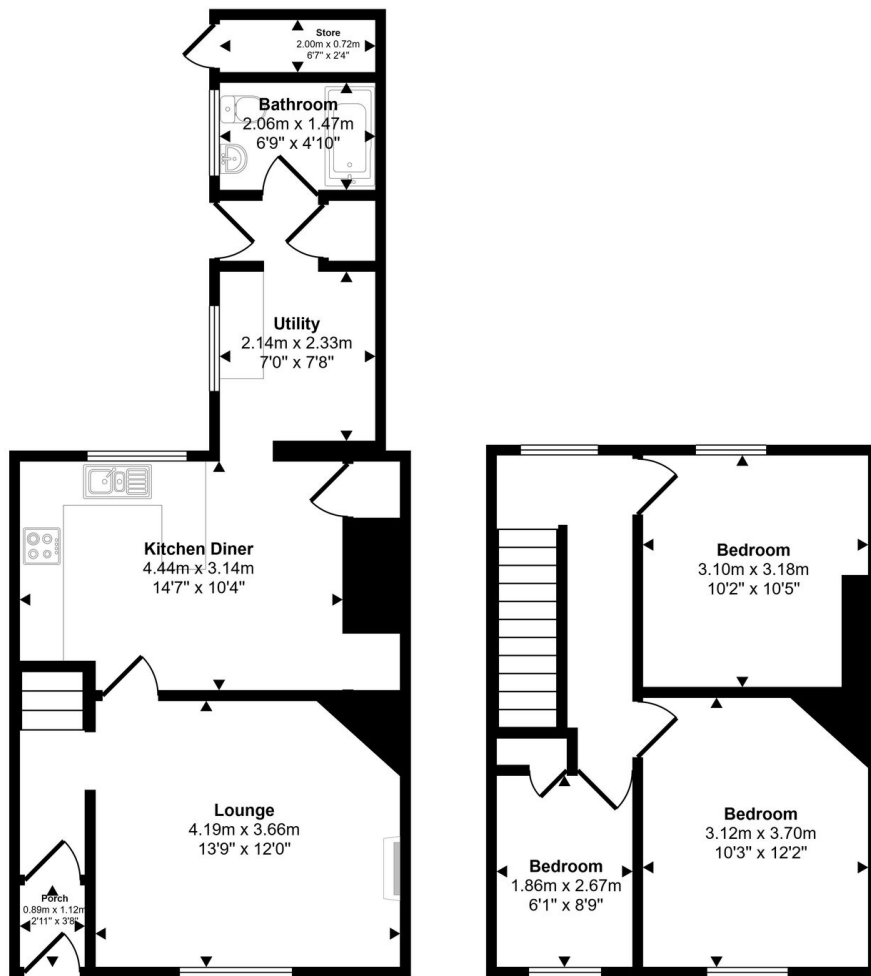
On Street Parking

Situated On Whitsun Grove In Bedlington This Nicely Presented Three Bedroom End Terraced House Briefly Comprises, Entrance Hallway, Lounge, Kitchen/Dining Room, Utility Room, Three Bedrooms, Bathroom/wc And Externally There Is A Private Rear Yard And To The Front Is A Lawned Garden With Flower Borders. TENURE – Freehold COUNCIL TAX BAND – A EPC RATING – D (POTENTIAL - C) <https://find-energy-certif...>

View full description at <https://www.moveplaces.co.uk/properties-for-sale/4437fdc7-a8fd-4a00-889b-795c24be5506>

Floor plans

Approx Gross Internal Area
84 sq m / 908 sq ft



Ground Floor

Approx 48 sq m / 519 sq ft

First Floor

Approx 36 sq m / 388 sq ft

Whilst every attempt has been made to ensure the accuracy of the floor plan contained here, measurements of doors, windows, rooms and any other items are approximate and no responsibility is taken for any error, omission, or mis-statement. The measurements should not be relied upon for valuation, transaction and/or funding purposes. This plan is for illustrative purposes only and should be used as such by any prospective purchaser or tenant.



View full details at <https://www.moveplaces.co.uk/properties-for-sale/4437fdc7-a8fd-4a00-889b-795c24be5506>