



Property details	
Beds	4
Baths	1
Parking spaces	1
Reception rooms	1
Gardens	1
Status	Freehold
Tenure	Sold STC
Energy efficiency rating	E
Energy efficiency	Current: 54.0, potential: 84.0
Environmental impact	Current: 45.0, potential: 81.0
Investment returns	
Current monthly rent	£720 pcm
Current rental yield	3.8%
Potential market value rent	£1159 pcm
Potential rental yield	6.1%
Estimated monthly capital appreciation	-£561
Area capital appreciation rate	-0.8%
Market dynamics	
Market velocity	Average turnover
Average days on market	45 days
Monthly stock turnover	35%
5-year net area growth	+0%

# Features

Council Tax Band A

Tenure Freehold

Terraced Bungalow

EPC RATING E - (POTENTIAL B)

Rent £700 per calendar month

BUY TO LET INVESTORS ONLY-Sold with Tenants in Situ

PRICED TO SELL!

Potential 10% Gross Yield PA

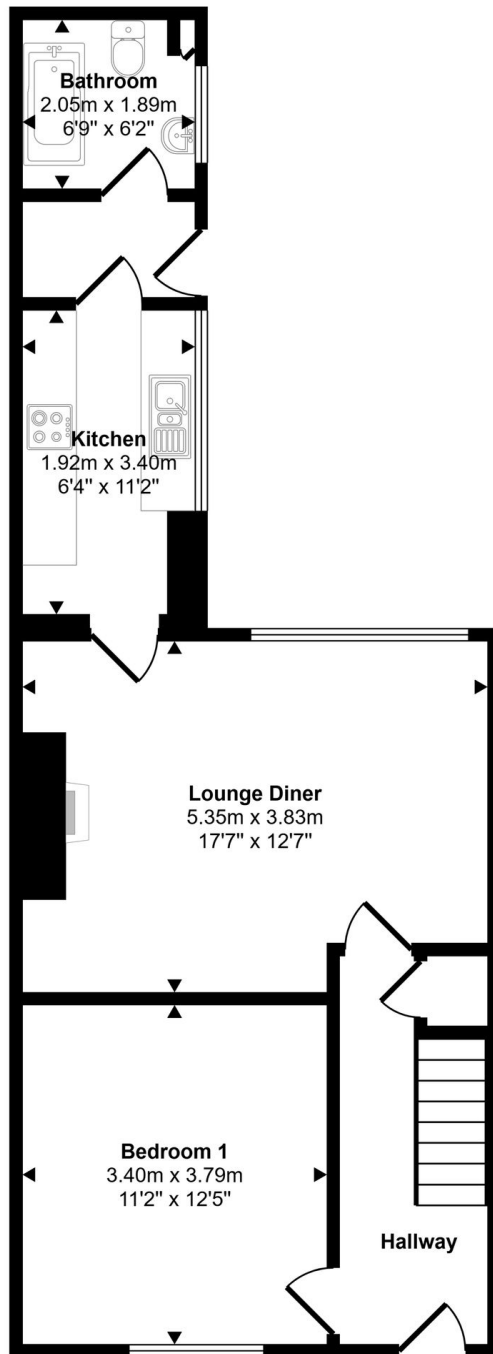
Private Rear Yard

Off-Road Parking

This well-presented four-bedroom terraced bungalow offers an excellent opportunity for buy-to-let investors, being sold with tenants in situ and currently achieving a rent of £700 per calendar month. The property is freehold and falls under Council Tax Band A, making it an attractive investment with an impressive potential gross yield of 10 percent per annum. Featuring a practical layout, the inte...


View full description at <https://www.moveplaces.co.uk/properties-for-sale/5150f8d4-604f-462b-bc2c-6d36b546657d>

# Floor plans

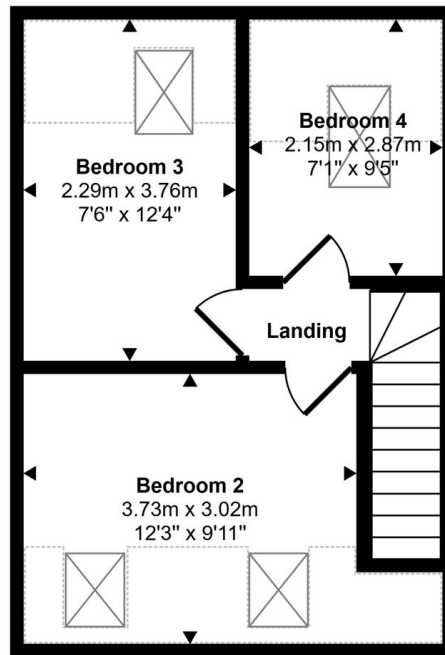


## Ground Floor

Approx 54 sq m / 577 sq ft


 Denotes head height below 1.5m

Whilst every attempt has been made to ensure the accuracy of the floor plan contained here, measurements of doors, windows, rooms and any other items are approximate and no responsibility is taken for any error, omission, or mis-statement. The measurements should not be relied upon for valuation, transaction and/or funding purposes. This plan is for illustrative purposes only and should be used as such by any prospective purchaser or tenant.



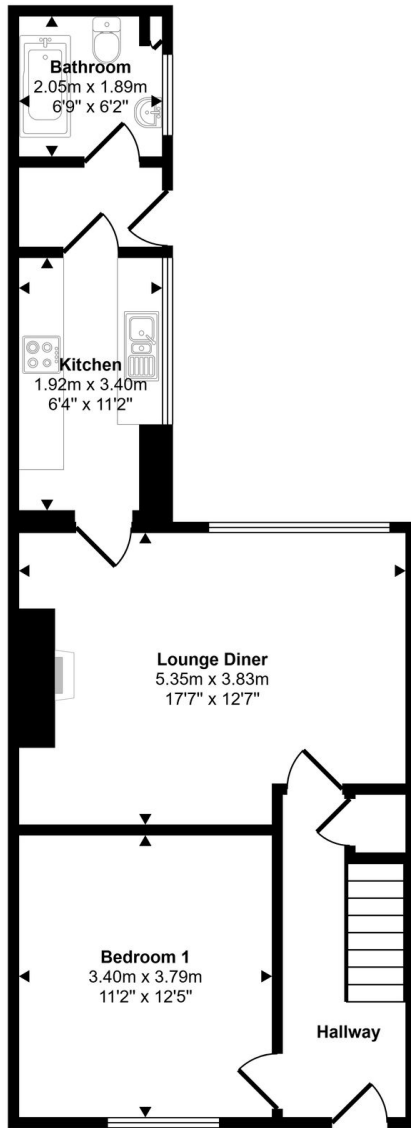
### First Floor

Approx 32 sq m / 344 sq ft

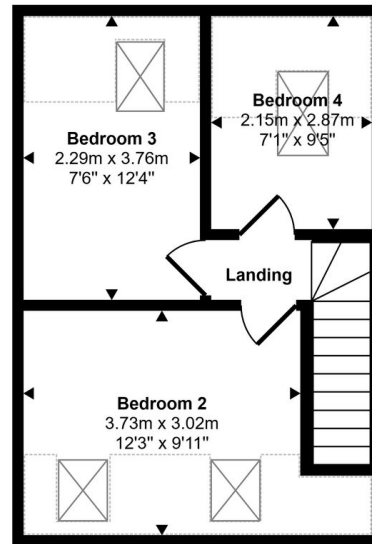
 Denotes head height below 1.5m

Whilst every attempt has been made to ensure the accuracy of the floor plan contained here, measurements of doors, windows, rooms and any other items are approximate and no responsibility is taken for any error, omission, or mis-statement. The measurements should not be relied upon for valuation, transaction and/or funding purposes. This plan is for illustrative purposes only and should be used as such by any prospective purchaser or tenant.


Approx Gross Internal Area  
86 sq m / 921 sq ft

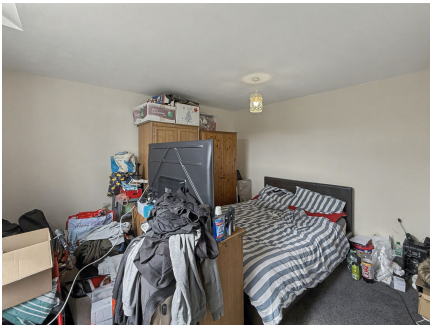


**Ground Floor**  
Approx 54 sq m / 577 sq ft



**First Floor**  
Approx 32 sq m / 344 sq ft

 Denotes head height below 1.5m  
Whilst every attempt has been made to ensure the accuracy of the floor plan contained here, measurements of doors, windows, rooms and any other items are approximate and no responsibility is taken for any error, omission, or mis-statement. The measurements should not be relied upon for valuation, transaction and/or funding purposes. This plan is for illustrative purposes only and should be used as such by any prospective purchaser or tenant.



View full details at <https://www.moveplaces.co.uk/properties-for-sale/5150f8d4-604f-462b-bc2c-6d36b546657d>