



Property details	
Beds	2
Baths	1
Parking spaces	1
Reception rooms	2
Gardens	1
Status	Leasehold
Tenure	Sold STC
Energy efficiency rating	C
Energy efficiency	Current: 69.0, potential: 86.0
Environmental impact	Current: 65.0, potential: 84.0
Investment returns	
Current monthly rent	£720 pcm
Current rental yield	3.8%
Potential market value rent	£1159 pcm
Potential rental yield	6.1%
Estimated monthly capital appreciation	-£561
Area capital appreciation rate	-0.8%
Market dynamics	
Market velocity	Average turnover
Average days on market	45 days
Monthly stock turnover	35%
5-year net area growth	+0%

Features

BUY TO LET INVESTORS ONLY SOLD WITH TENANTS IN SITU

Current Rent £795pcm=Gross Yield 8.6% pa

Leasehold-Lease Length 850 Years Remaining

On Street Parking (Unallocated)

Private Rear Garden

Council Tax Band A

EPC C-Potential B

2 Reception Rooms

Large Family Bathroom to 1st Floor

Town Centre Location Close to Amenities/Transport Links

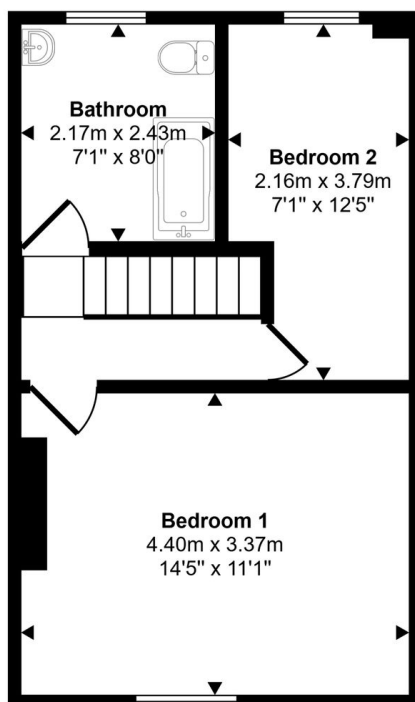
BUY TO LET INVESTORS ONLY-SOLD WITH TENANTS IN SITU CURRENT RENT £795 PCM= GROSS YIELD 8.6%

PA LEASEHOLD-Lease Length 850 Years Remaining EPC C-Potential B [https://find-energy-](https://find-energy-certificate.service.gov.uk/energy-certificate/1437-2529-9200-0923-3222)

[certificate.service.gov.uk/energy-certificate/1437-2529-9200-0923-3222](https://find-energy-certificate.service.gov.uk/energy-certificate/1437-2529-9200-0923-3222) This well-presented two-bedroom mid-terraced house offers an excellent opportunity for buy-to-let investors, as it is being sold with tenants in situ and...

View full description at <https://www.moveplaces.co.uk/properties-for-sale/625dcf23-06d6-4d3f-9886-76f028d662dd>

Floor plans

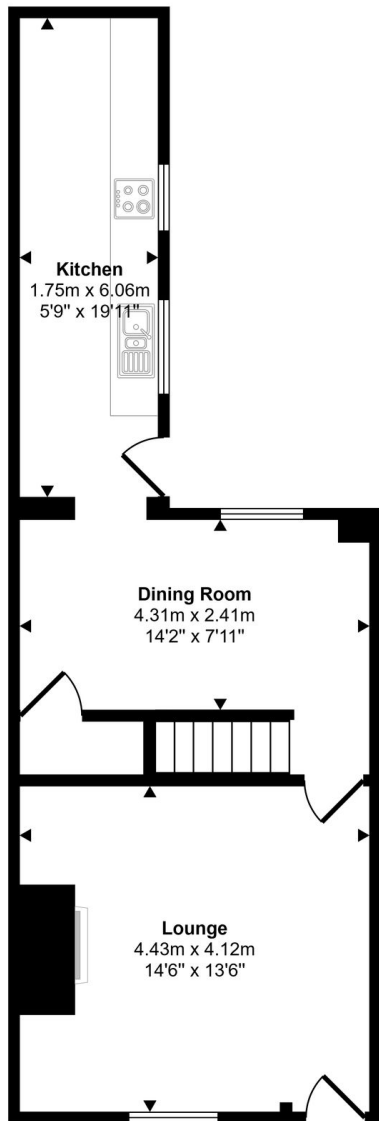


First Floor

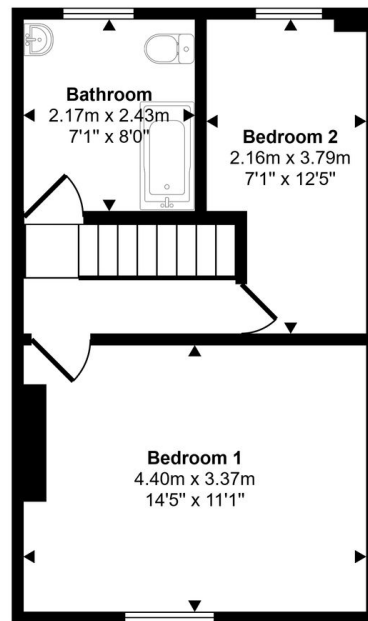
Approx 33 sq m / 354 sq ft

Whilst every attempt has been made to ensure the accuracy of the floor plan contained here, measurements of doors, windows, rooms and any other items are approximate and no responsibility is taken for any error, omission, or mis-statement. The measurements should not be relied upon for valuation, transaction and/or funding purposes. This plan is for illustrative purposes only and should be used as such by any prospective purchaser or tenant.

Approx Gross Internal Area
77 sq m / 831 sq ft

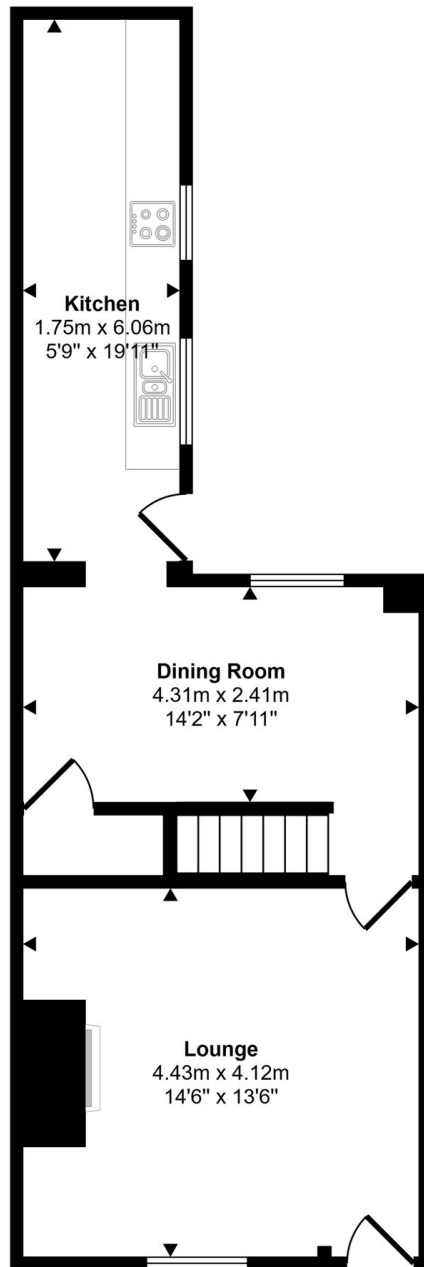
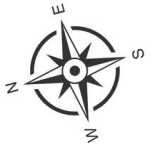


Ground Floor
Approx 44 sq m / 477 sq ft



First Floor
Approx 33 sq m / 354 sq ft

Whilst every attempt has been made to ensure the accuracy of the floor plan contained here, measurements of doors, windows, rooms and any other items are approximate and no responsibility is taken for any error, omission, or mis-statement. The measurements should not be relied upon for valuation, transaction and/or funding purposes. This plan is for illustrative purposes only and should be used as such by any prospective purchaser or tenant.



Ground Floor

Approx 44 sq m / 477 sq ft

Whilst every attempt has been made to ensure the accuracy of the floor plan contained here, measurements of doors, windows, rooms and any other items are approximate and no responsibility is taken for any error, omission, or mis-statement. The measurements should not be relied upon for valuation, transaction and/or funding purposes. This plan is for illustrative purposes only and should be used as such by any prospective purchaser or tenant.



View full details at <https://www.moveplaces.co.uk/properties-for-sale/625dcf23-06d6-4d3f-9886-76f028d662dd>