



| Property details | |
|--|-----------------------|
| Beds | 3 |
| Baths | 1 |
| Parking spaces | 2 |
| Reception rooms | 2 |
| Gardens | 1 |
| Status | Freehold |
| Tenure | Under Offer |
| Energy efficiency rating | |
| Energy efficiency | Current: , potential: |
| Environmental impact | Current: , potential: |
| Investment returns | |
| Current monthly rent | £1300 pcm |
| Current rental yield | 5.2% |
| Potential market value rent | £1573 pcm |
| Potential rental yield | 6.3% |
| Estimated monthly capital appreciation | -£1066 |
| Area capital appreciation rate | -3.6% |
| Market dynamics | |
| Market velocity | Slow moving |
| Average days on market | 179 |
| Monthly stock turnover | 17% |
| 5-year net area growth | +4.3% |

Features

Semi-detached - Freehold

2 Reception Rooms

Driveway & Garage

PRICED TO SELL - VACANT AND CHAIN FREE

Council Tax Band C

EPC Rating D - Potential C

Large Rear Garden

Wet Room to Ground Floor

In need of Modernisation

Close to Amenities & Town Centre

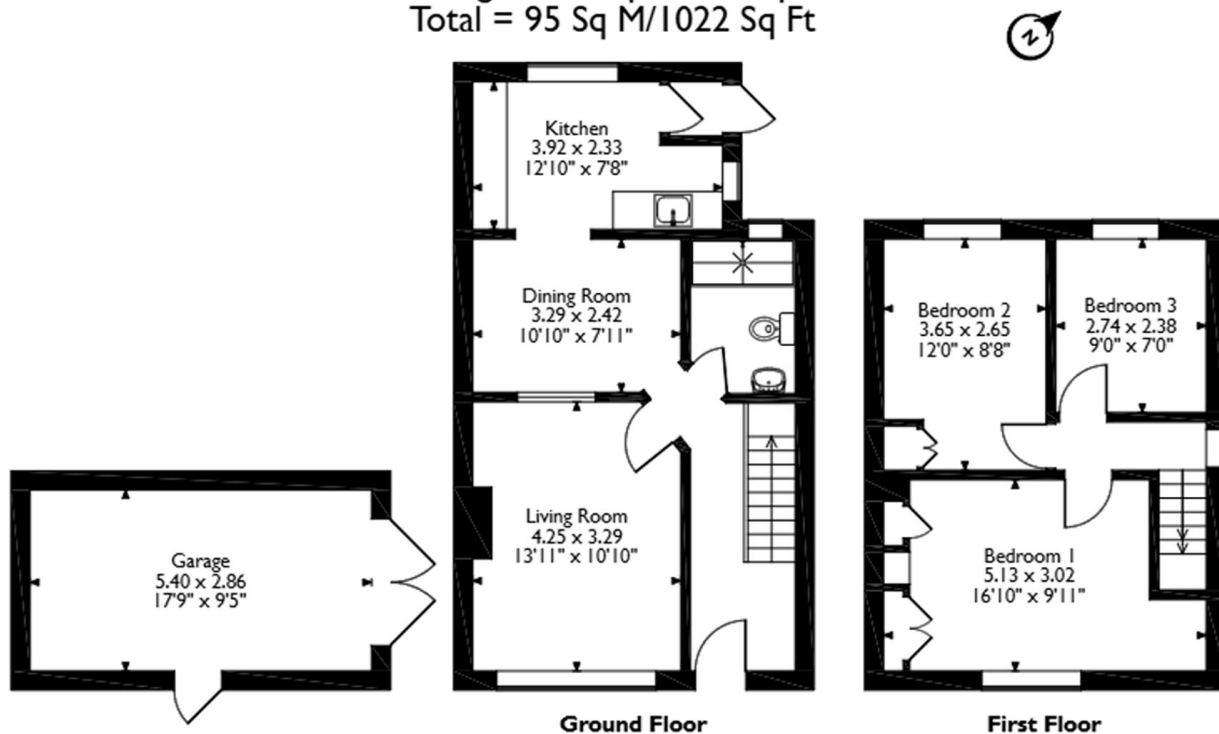
PRICED TO SELL! VACANT & CHAIN FREE EPC D-POTENTIAL C [https://find-energy-](https://find-energy-certificate.service.gov.uk/energy-certificate/0370-2191-3570-2806-3951)

[certificate.service.gov.uk/energy-certificate/0370-2191-3570-2806-3951](https://find-energy-certificate.service.gov.uk/energy-certificate/0370-2191-3570-2806-3951) This three bedroom semi-detached house offers an excellent opportunity for buyers seeking a spacious home with significant potential. Priced to sell and available with no onward chain, the property is vacant and ready for immediate occupation. The accommo...

View full description at <https://www.moveplaces.co.uk/properties-for-sale/74950120-8209-440c-8a0c-228e540c03c9>

Floor plans

Approximate Gross Internal Area
Main House = 80 Sq M/861 Sq Ft
Garage = 15 Sq M/161 Sq Ft
Total = 95 Sq M/1022 Sq Ft



Please note that the location of doors, windows and other items are approximate and this floorplan is to be used for illustrative purposes only. Unauthorized reproduction is prohibited.



View full details at <https://www.moveplaces.co.uk/properties-for-sale/74950120-8209-440c-8a0c-228e540c03c9>