



Property details

Beds	1
Baths	1
Parking spaces	1
Reception rooms	1
Gardens	1
Status	Leasehold
Tenure	Sold STC

Energy efficiency rating

Energy efficiency Current: 82.0, potential: 85.0

Environmental impact Current: 79.0, potential: 79.0

Investment returns

Current monthly rent	Unknown
Current rental yield	Unknown
Potential market value rent	Unknown
Potential rental yield	Unknown
Estimated monthly capital appreciation	£983
Area capital appreciation rate	+7.1%

Market dynamics

Monthly stock turnover	7%
5-year net area growth	+5.1%

Features

SERVICE CHARGE £2496 pa GROUND RENT £200 pa

LEASE LENGTH - 128 Years Remaining

PRICED TO SELL! VACANT & CHAIN FREE

POTENTIAL RENTAL INCOME - £900 pcm GROSS YIELD 14% pa

SECURE UNDERGROUND ALLOCATED PARKING X 1

B1 EWS1 Rating-Flat is Mortgageable

PRIVATE BALCONY

EPC B- POTENTIAL B

COUNCIL TAX BAND B

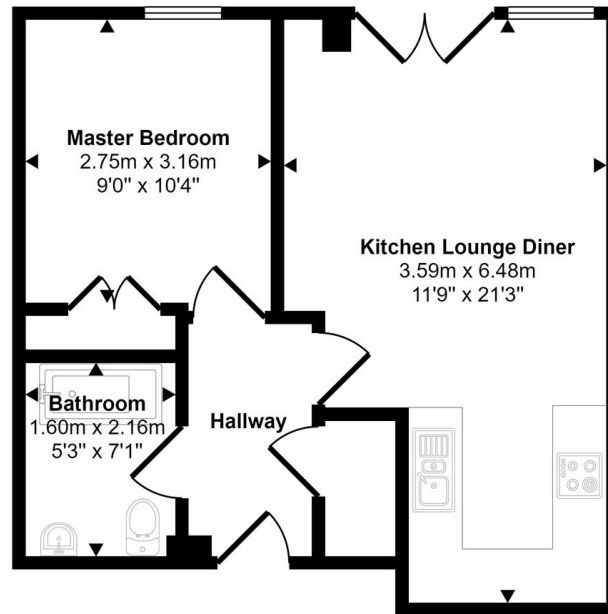
CASH/BRIDGING FINANCE BUYERS ONLY-CLIENT REQUIRES COMPLETION ASAP

CASH/BRIDGING FINANCE BUYERS ONLY-CLIENT REQUIRES COMPLETION ASAP B1 EWS1 Rating-Flat is Mortgageable POTENTIAL RENTAL INCOME - £900pcm POTENTIAL GROSS YIELD - 14% TENURE - Leasehold LEASE LENGTH - 127 years remaining GROUND RENT - £200pa SERVICE CHARGE - £2496 pa COUNCIL TAX BAND - B EPC RATING - B (POTENTIAL - B) <https://find-energy-certificate.service.gov.uk/energy-certificate/8781-6228-6730-21...>

View full description at <https://www.moveplaces.co.uk/properties-for-sale/7fed33a4-5d89-481f-86ac-efddc764ed05>

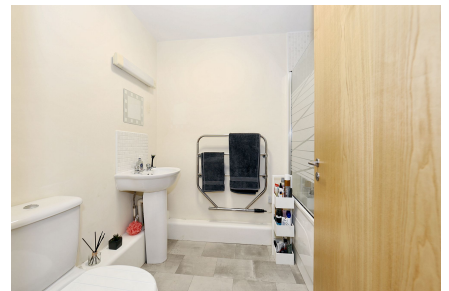
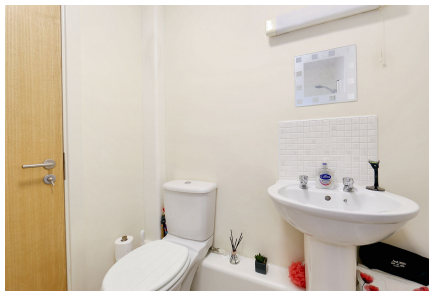
Floor plans

Approx Gross Internal Area
40 sq m / 428 sq ft



Floorplan

Whilst every attempt has been made to ensure the accuracy of the floor plan contained here, measurements of doors, windows, rooms and any other items are approximate and no responsibility is taken for any error, omission, or mis-statement. The measurements should not be relied upon for valuation, transaction and/or funding purposes. This plan is for illustrative purposes only and should be used as such by any prospective purchaser or tenant.



View full details at <https://www.moveplaces.co.uk/properties-for-sale/7fed33a4-5d89-481f-86ac-efddc764ed05>