



Property details	
Beds	3
Baths	1
Parking spaces	1
Reception rooms	1
Gardens	1
Status	Freehold
Tenure	For Sale
Energy efficiency rating	D
Energy efficiency	Current: 65.0, potential: 79.0
Environmental impact	Current: 60.0, potential: 75.0
Investment returns	
Current monthly rent	£802 pcm
Current rental yield	6.7%
Potential market value rent	£940 pcm
Potential rental yield	7.9%
Estimated monthly capital appreciation	Unknown
Area capital appreciation rate	+0.0%
Market dynamics	
Market velocity	Slow moving
Average days on market	138
Monthly stock turnover	22%
5-year net area growth	+14.1%

Features

PRICED TO SELL! VACANT & CHAIN FREE

TENURE - Freehold

COUNCIL TAX BAND - A

EPC RATING - D (POTENTIAL - C)

Ideal First Time Home or Buy to Let

Potential Rent £900 pcm=Gross Yield 9% pa

Spacious Kitchen with Separate Utility Room

Family Bathroom with Separate Toilet

Off Road Parking (Shared Driveway)

In need of Modernisation

PRICED TO SELL - CHAIN FREE & VACANT TENURE - Freehold COUNCIL TAX BAND - A EPC RATING -

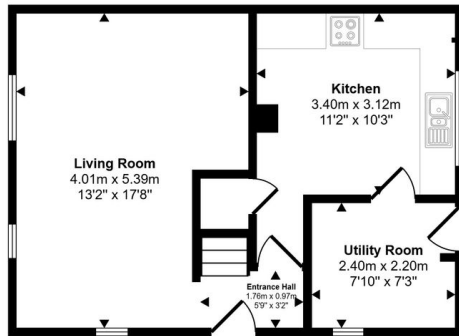
D (POTENTIAL - C) <https://find-energy-certificate.service.gov.uk/energy-certificate/9351-3006-7205-1219-4204>

We are pleased to be marketing this spacious 3 bedroom semi detached freehold house, conveniently situated on the outskirts of Castleford which has an array of amenities and good transport links to Leeds...

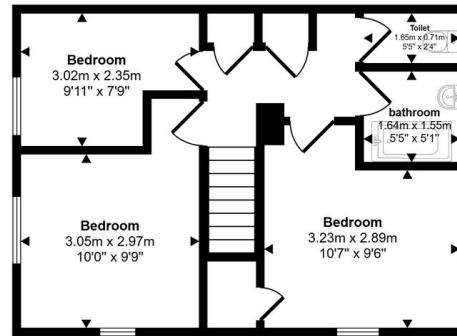
View full description at <https://www.moveplaces.co.uk/properties-for-sale/b0571f7b-16b4-402a-be74-2d75bf6e5312>

Floor plans

Approx Gross Internal Area
82 sq m / 877 sq ft



Ground Floor
Approx 41 sq m / 439 sq ft



First Floor
Approx 41 sq m / 438 sq ft

Whilst every attempt has been made to ensure the accuracy of the floor plan contained here, measurements of doors, windows, rooms and any other items are approximate and no responsibility is taken for any error, omission, or mis-statement. The measurements should not be relied upon for valuation, transaction and/or funding purposes. This plan is for illustrative purposes only and should be used as such by any prospective purchaser or tenant.



View full details at <https://www.moveplaces.co.uk/properties-for-sale/b0571f7b-16b4-402a-be74-2d75bf6e5312>