



| | |
|--------------------------|--------------------------------|
| Beds | 4 |
| Baths | 1 |
| Parking spaces | 1 |
| Reception rooms | 3 |
| Gardens | 2 |
| Status | Freehold |
| Tenure | For Sale |
| Energy efficiency rating | C |
| Energy efficiency | Current: 76.0, potential: 87.0 |
| Environmental impact | Current: 74.0, potential: 86.0 |

Features

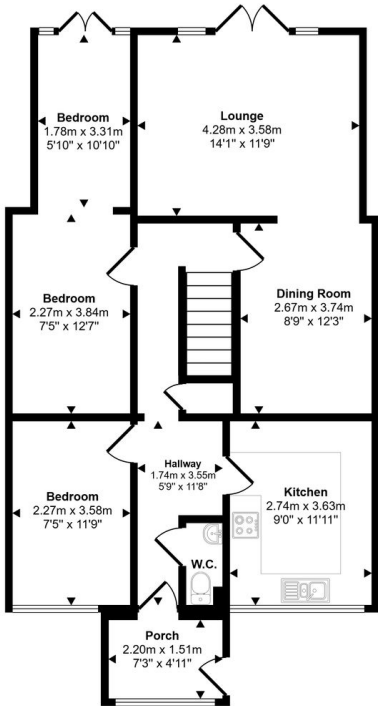
FREEHOLD MID TERRACE
AVAILABLE WITH CHAIN FREE VACANT POSSESSION
4/5 BEDROOMS (2 ON FIRST FLOOR)
DOWNSTAIRS W.C & UPSTAIRS FAMILY BATHROOM
GARAGE WITH PARKING SPACE TO REAR
1401 Square Feet with 2/3 RECEPTION ROOMS
RECLAD 2024- 'HARDIE PLANK' A1 FIRE RATING
LARGE REAR GARDEN WITH ACCESS TO PLAYING FIELDS
EPC C POTENTIAL B
COUNCIL TAX BAND A

NON STANDARD CONSTRUCTION (TIMBER-CHECK LENDERS CRITERIA) FRONT RECLAD IN 2024-'Hardie Plank' A1 FIRE RATING AVAILABLE WITH CHAIN FREE VACANT POSSESSION Move Places are pleased to be marketing this spacious, extended mid terraced freehold house, located in the popular Bradville area. To the ground floor, the property briefly consists of a porch with a new roof fitted 2023, welcoming hallway, WC wi...

View full description at <https://www.moveplaces.co.uk/properties-for-sale/b8756628-033e-4699-bead-7a399fc45ced>

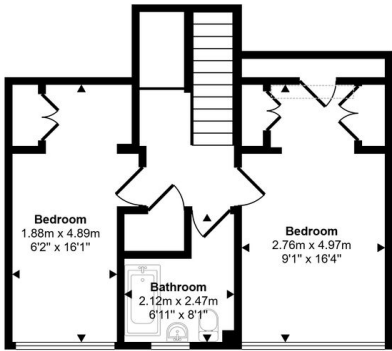
Floor plans

Approx Gross Internal Area
130 sq m / 1401 sq ft

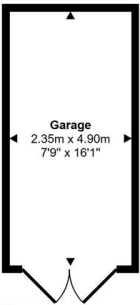


Ground Floor
Approx 79 sq m / 849 sq ft

Denotes head height below 1.5m

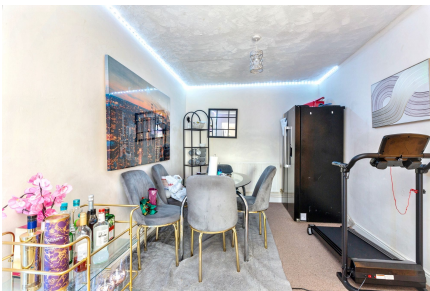


First Floor
Approx 40 sq m / 428 sq ft



Garage
Approx 12 sq m / 124 sq ft

Whilst every attempt has been made to ensure the accuracy of the floor plan contained here, measurements of doors, windows, rooms and any other items are approximate and no responsibility is taken for any error, omission, or mis-statement. The measurements should not be relied upon for valuation, transaction and/or funding purposes. This plan is for illustrative purposes only and should be used as such by any prospective purchaser or tenant.



View full details at <https://www.moveplaces.co.uk/properties-for-sale/b8756628-033e-4699-bead-7a399fc45ced>