



Beds	3
Baths	1
Parking spaces	1
Reception rooms	2
Gardens	1
Status	Freehold
Tenure	For Sale
Energy efficiency rating	D
Energy efficiency	Current: 65.0, potential: 86.0
Environmental impact	Current: 59.0, potential: 83.0

Features

PRICED TO SELL! Vacant & Chain Free

Downstairs W.C & Upstairs Family Bathroom

Driveway for 2-3 Cars

Potential to Improve & Extend (STPP)

Large Rear Gardens with Garage

2 Separate Reception Rooms

Council Tax Band C

EPC D-Potential B

Sought After Suburb of Sutton Coldfield

8 Miles to Birmingham City Centre

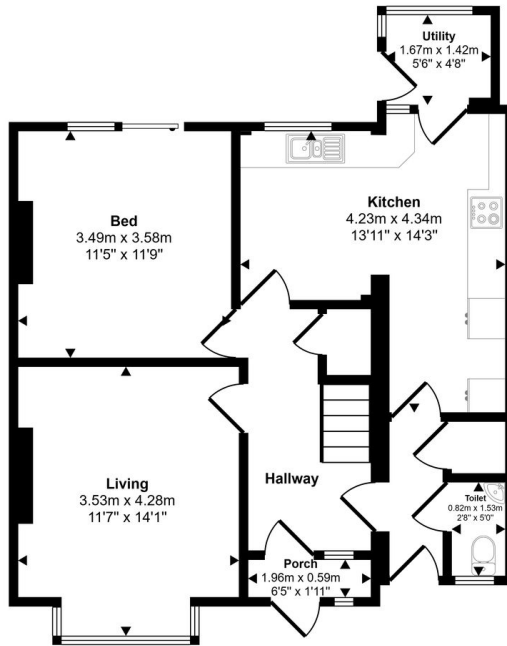
PRICED TO SELL! VACANT & CHAIN FREE POTENTIAL TO IMPROVE & EXTEND (STPP) Move Places are pleased to be marketing this well-proportioned three-bedroom semi-detached house, ideally situated in a sought after suburb of Sutton Coldfield, just eight miles from Birmingham city centre. Offered to the market vacant and chain free, this property is priced to sell and presents an excellent opportunity for b...

View full description at <https://www.moveplaces.co.uk/properties-for-sale/b8815169-314b-473f-974c-1ef5e03366cc>

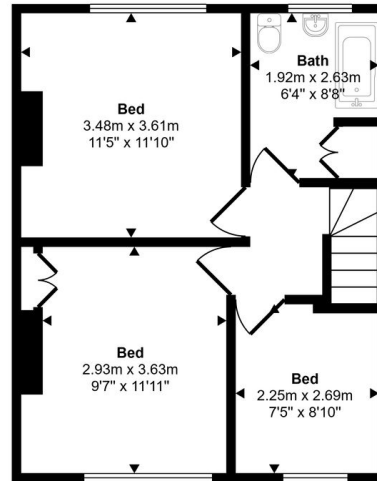
Floor plans



Approx Gross Internal Area
102 sq m / 1097 sq ft

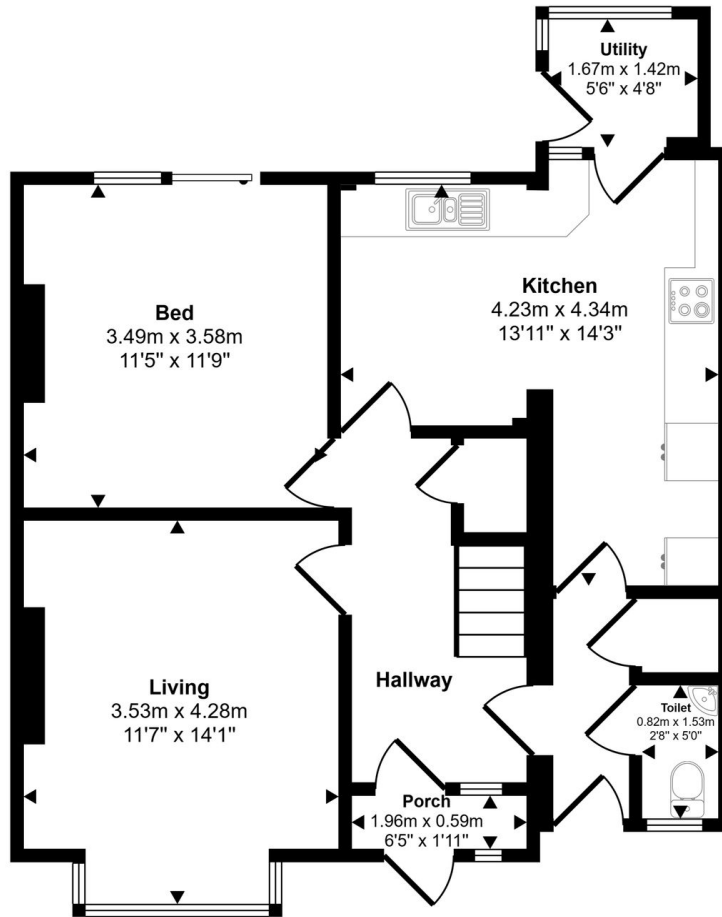


Ground Floor
Approx 61 sq m / 655 sq ft



First Floor
Approx 41 sq m / 442 sq ft

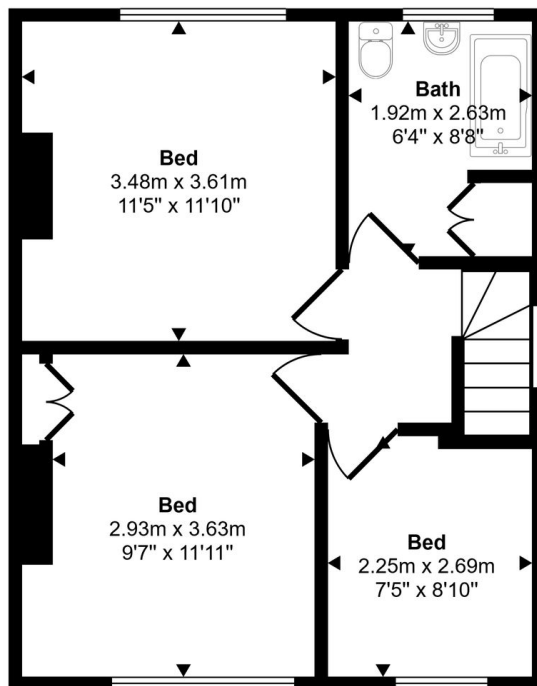
Whilst every attempt has been made to ensure the accuracy of the floor plan contained here, measurements of doors, windows, rooms and any other items are approximate and no responsibility is taken for any error, omission, or mis-statement. The measurements should not be relied upon for valuation, transaction and/or funding purposes. This plan is for illustrative purposes only and should be used as such by any prospective purchaser or tenant.



Ground Floor

Approx 61 sq m / 655 sq ft

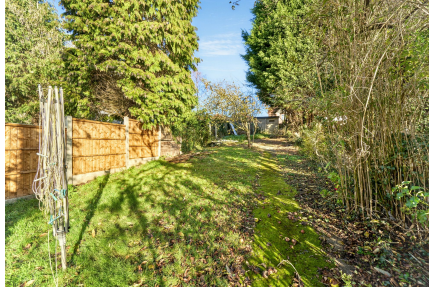
Whilst every attempt has been made to ensure the accuracy of the floor plan contained here, measurements of doors, windows, rooms and any other items are approximate and no responsibility is taken for any error, omission, or mis-statement. The measurements should not be relied upon for valuation, transaction and/or funding purposes. This plan is for illustrative purposes only and should be used as such by any prospective purchaser or tenant.



First Floor

Approx 41 sq m / 442 sq ft

Whilst every attempt has been made to ensure the accuracy of the floor plan contained here, measurements of doors, windows, rooms and any other items are approximate and no responsibility is taken for any error, omission, or mis-statement. The measurements should not be relied upon for valuation, transaction and/or funding purposes. This plan is for illustrative purposes only and should be used as such by any prospective purchaser or tenant.



View full details at <https://www.moveplaces.co.uk/properties-for-sale/b8815169-314b-473f-974c-1ef5e03366cc>