



Property details	
Beds	3
Baths	1
Parking spaces	1
Reception rooms	2
Gardens	1
Status	Freehold
Tenure	Sold STC
Energy efficiency rating	E
Energy efficiency	Current: 54.0, potential: 81.0
Environmental impact	Current: 46.0, potential: 77.0
Investment returns	
Current monthly rent	£720 pcm
Current rental yield	3.8%
Potential market value rent	£1159 pcm
Potential rental yield	6.1%
Estimated monthly capital appreciation	-£561
Area capital appreciation rate	-0.8%
Market dynamics	
Market velocity	Average turnover
Average days on market	45 days
Monthly stock turnover	35%
5-year net area growth	+0%

Features

Council Tax Band A

Tenure Freehold

2 Reception Rooms

908 Sq Ft Terraced Bungalow

Current Rent £450 per calendar month-Gross Yield 7.71% per annum

BUY TO LET INVESTORS ONLY-Sold with Tenants in Situ

PRICED TO SELL!

EPC RATING E - (POTENTIAL B)

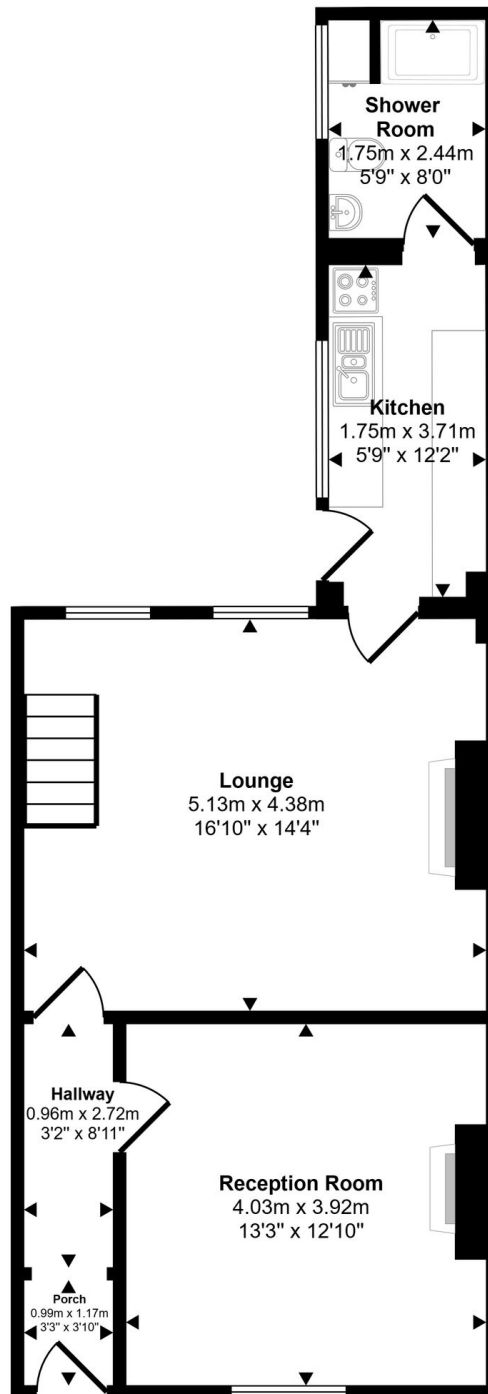
Rear Yard-Potential Off Road Parking

Close to Local Amenities & Transport Links

This well-presented 3-bedroom terraced bungalow offers an excellent opportunity for buy-to-let investors, with tenants already in situ and a current rental income of £450 per calendar month, resulting in a gross yield of 7.71% per annum. The property is freehold and sits within Council Tax Band A, making it an appealing proposition for those seeking value and long-term investment potential. Boasti...


View full description at <https://www.moveplaces.co.uk/properties-for-sale/d95b124e-85d8-4b32-bb65-a3f3a9620d61>

Floor plans



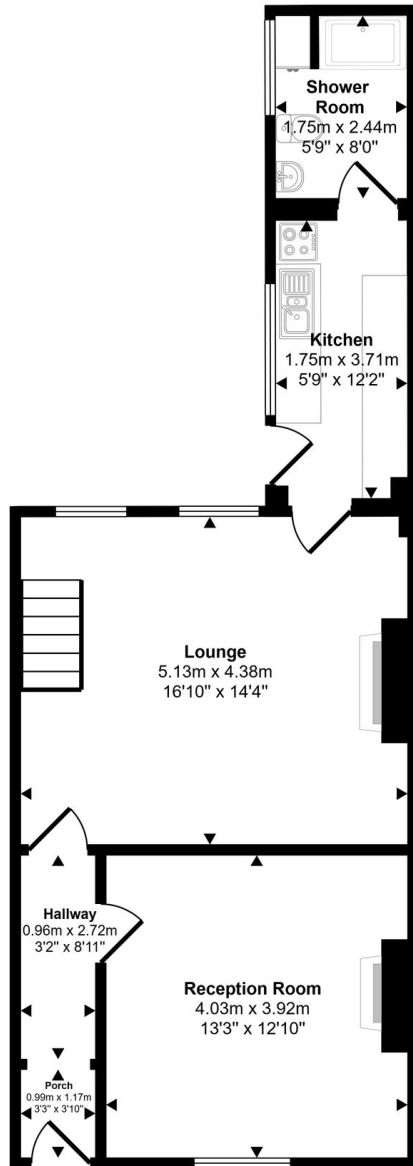
Ground Floor

Approx 56 sq m / 600 sq ft

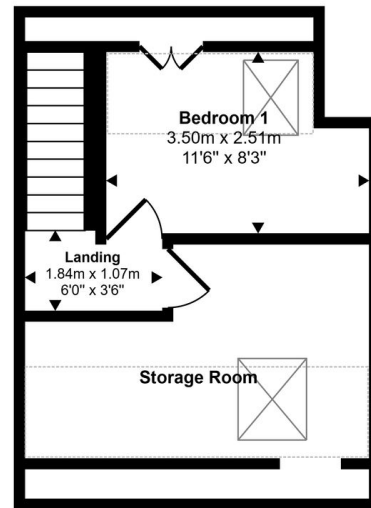
 Denotes head height below 1.5m

Whilst every attempt has been made to ensure the accuracy of the floor plan contained here, measurements of doors, windows, rooms and any other items are approximate and no responsibility is taken for any error, omission, or mis-statement. The measurements should not be relied upon for valuation, transaction and/or funding purposes. This plan is for illustrative purposes only and should be used as such by any prospective purchaser or tenant.


Approx Gross Internal Area
84 sq m / 908 sq ft

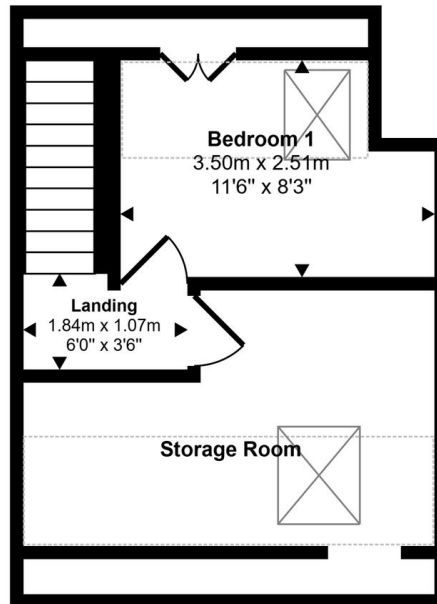


Ground Floor
Approx 56 sq m / 600 sq ft




First Floor
Approx 29 sq m / 308 sq ft

 Denotes head height below 1.5m
Whilst every attempt has been made to ensure the accuracy of the floor plan contained here, measurements of doors, windows, rooms and any other items are approximate and no responsibility is taken for any error, omission, or mis-statement. The measurements should not be relied upon for valuation, transaction and/or funding purposes. This plan is for illustrative purposes only and should be used as such by any prospective purchaser or tenant.



First Floor

Approx 29 sq m / 308 sq ft

 Denotes head height below 1.5m

Whilst every attempt has been made to ensure the accuracy of the floor plan contained here, measurements of doors, windows, rooms and any other items are approximate and no responsibility is taken for any error, omission, or mis-statement. The measurements should not be relied upon for valuation, transaction and/or funding purposes. This plan is for illustrative purposes only and should be used as such by any prospective purchaser or tenant.



View full details at <https://www.moveplaces.co.uk/properties-for-sale/d95b124e-85d8-4b32-bb65-a3f3a9620d61>