



Beds	2
Baths	1
Parking spaces	1
Reception rooms	2
Gardens	1
Status	Freehold
Tenure	For Sale
Energy efficiency rating	D
Energy efficiency	Current: 60.0, potential: 70.0
Environmental impact	Current: 54.0, potential: 65.0

# Features

BUY TO LET INVESTORS ONLY – SOLD WITH TENANTS IN SITU

RENTAL INCOME – £600 pcm

GROSS YIELD – 11% pa

TENANT IN SITU SINCE – November 2023

CONTRACT REMAINING – AST

DEPOSIT PAID – £605

TENURE – Freehold

COUNCIL TAX BAND – A

EPC D - POTENTIAL B

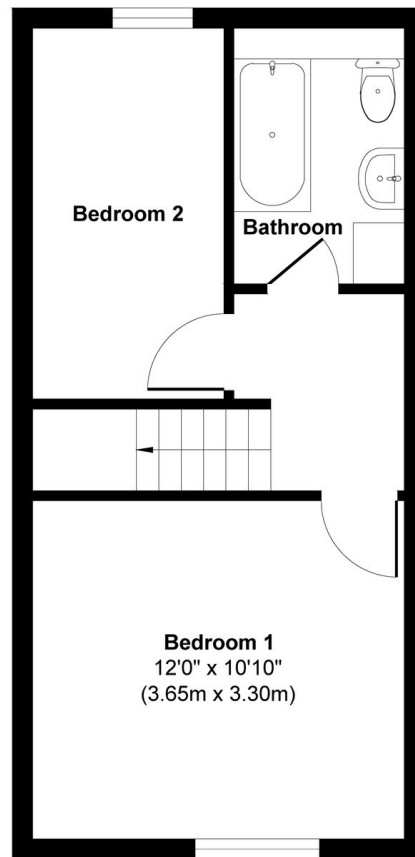
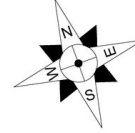
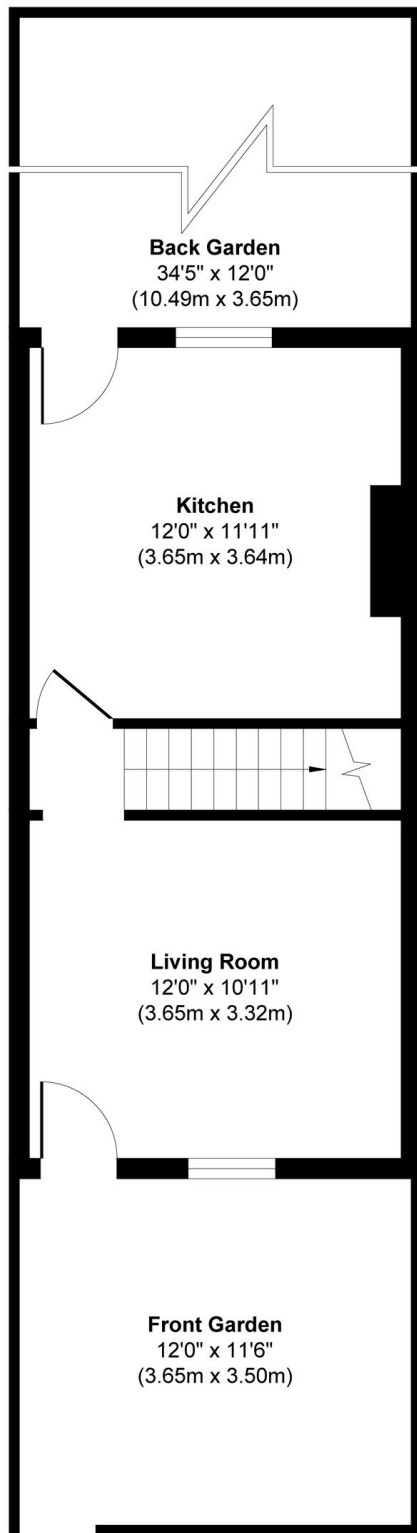
TENURE – Freehold COUNCIL TAX BAND – A EPC RATING – D (POTENTIAL - B) CHAIN FREE Potential rent of £650 per month <https://find-energy-certificate.service.gov.uk/energy-certificate/2172-1214-6771-6588-1112>

We're pleased to be marketing this attractive, two bedroom terraced house in the area of Rotherham, which benefits from easy access to local supermarkets, schools and easy access to the M1. The p...

View full description at <https://www.moveplaces.co.uk/properties-for-sale/e924e0d7-a923-4661-8ba2-89945205e813>

# Floor plans

**Brinsworth Road, Catcliffe, Rotherham, S60**

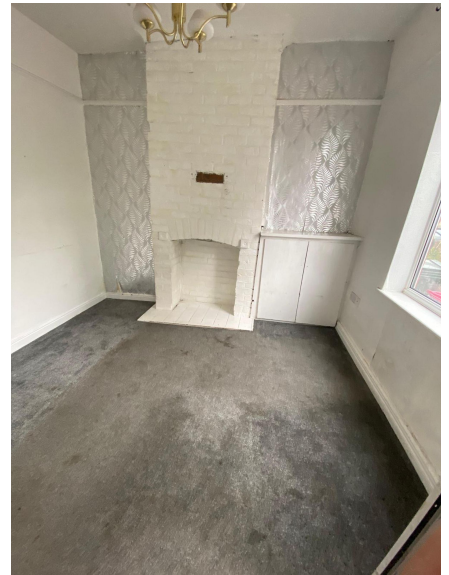


**Ground Floor**  
Approximate Floor Area  
312 sq. ft  
(29.05 sq. m)

**First Floor**  
Approximate Floor Area  
312 sq. ft  
(29.05 sq. m)

**Approx. Gross Internal Floor Area 624 sq. ft / 58.10 sq. m**





View full details at <https://www.moveplaces.co.uk/properties-for-sale/e924e0d7-a923-4661-8ba2-89945205e813>