



Property details

Beds	2
Baths	1
Parking spaces	1
Reception rooms	1
Gardens	2
Status	Freehold
Tenure	Sold STC
Energy efficiency rating	D
Energy efficiency	Current: 62.0, potential: 84.0
Environmental impact	Current: 60.0, potential: 84.0

Investment returns

Current monthly rent	£702 pcm
Current rental yield	9.2%
Potential market value rent	£815 pcm
Potential rental yield	10.7%
Estimated monthly capital appreciation	£1724
Area capital appreciation rate	+11.8%

Market dynamics

Monthly stock turnover	27%
5-year net area growth	+22.3%

Features

PRICED TO SELL! VACANT & CHAIN FREE

Front & Rear Gardens

Paved Driveway

Spacious Lounge & Dining Room

Modern Family Bathroom

Council Tax Band A

EPC D-Potential B

Ideal First Time Home or Buy to Let

Potential Rent £850 pcm= 7.8% Gross Yield pa

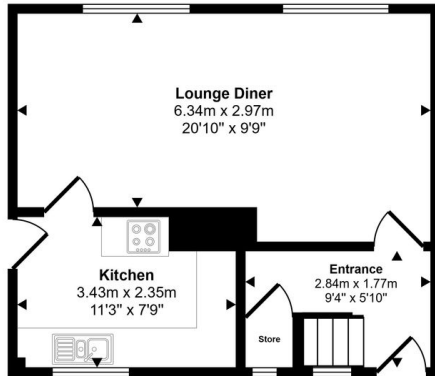
Close to Town Centre & A557

PRICED TO SELL! VACANT & CHAIN FREE EPC D-Potential C <https://find-energy-certificate.service.gov.uk/energy-certificate/8509-9786-9922-9197-8703> This well-presented two bedroom semi-detached house is offered to the market vacant and chain free, making it an excellent opportunity for first time buyers or investors. Priced to sell, the property features a spacious lounge and a separate dining room,...

View full description at <https://www.moveplaces.co.uk/properties-for-sale/f84bf17a-0998-4230-89f1-5a6ba73794ee>

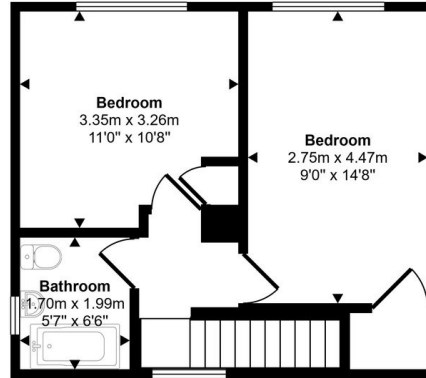
Floor plans

Approx Gross Internal Area
69 sq m / 739 sq ft



Ground Floor

Approx 35 sq m / 372 sq ft



First Floor

Approx 34 sq m / 367 sq ft

Whilst every attempt has been made to ensure the accuracy of the floor plan contained here, measurements of doors, windows, rooms and any other items are approximate and no responsibility is taken for any error, omission, or mis-statement. The measurements should not be relied upon for valuation, transaction and/or funding purposes. This plan is for illustrative purposes only and should be used as such by any prospective purchaser or tenant.



View full details at <https://www.moveplaces.co.uk/properties-for-sale/f84bf17a-0998-4230-89f1-5a6ba73794ee>