



Property details	
Beds	1
Baths	1
Parking spaces	1
Reception rooms	1
Status	Leasehold
Tenure	For Sale
Energy efficiency rating	C
Energy efficiency	Current: 75.0, potential: 75.0
Environmental impact	Current: 78.0, potential: 78.0
Investment returns	
Current monthly rent	£720 pcm
Current rental yield	3.8%
Potential market value rent	£1159 pcm
Potential rental yield	6.1%
Estimated monthly capital appreciation	-£561
Area capital appreciation rate	-0.8%
Market dynamics	
Market velocity	Average turnover
Average days on market	45 days
Monthly stock turnover	35%
5-year net area growth	+0%

Features

PRICED TO SELL!

Ground Rent £150 per annum

Service Charge £1257 per annum (Paid Quarterly)

Current Rent £525 pcm = Gross Yield £15% pa

On Street Parking (Unallocated)

BUY TO LET INVESTORS ONLY-SOLD WITH TENANT IN SITU

Council Tax Band A

EPC C-Potential C

Town Centre Location

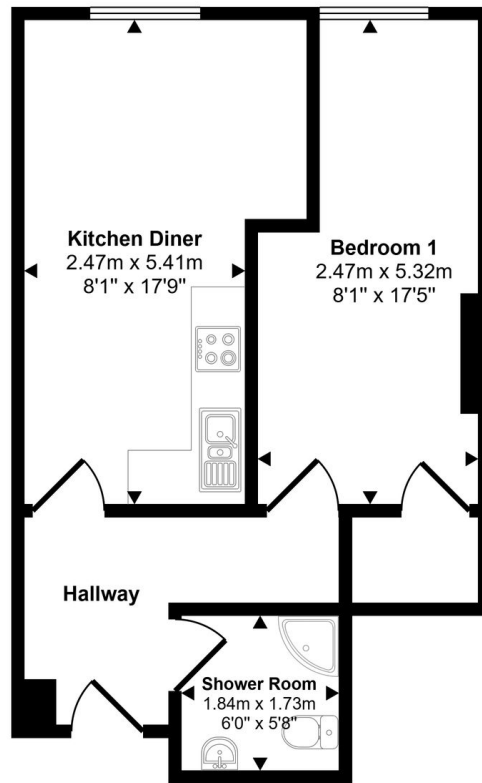
Leasehold-115 Years Remaining

PRICED TO SELL! BUY TO LET INVESTORS ONLY-SOLD WITH TENANT IN SITU 1st Floor Modern Apartment
Current Rent £525 pcm=Gross Yield 15% per annum Potential Vacant Possession on Completion Leasehold-115
Years Remaining Ground Rent £150pa & Service Charge £1257 pa (paid quarterly) This well-presented one-bedroom
flat offers an excellent opportunity for investors, boasting a prime town centre location wi...

View full description at <https://www.moveplaces.co.uk/properties-for-sale/f97ad0df-f602-4ea1-bc65-fd5013da9ad7>

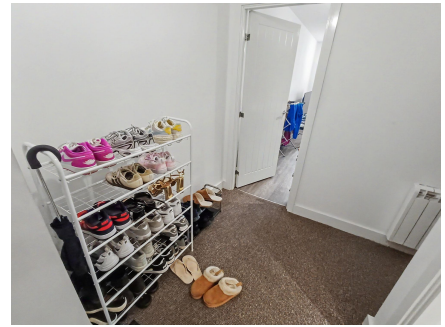
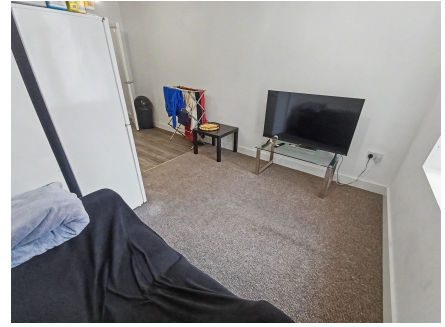
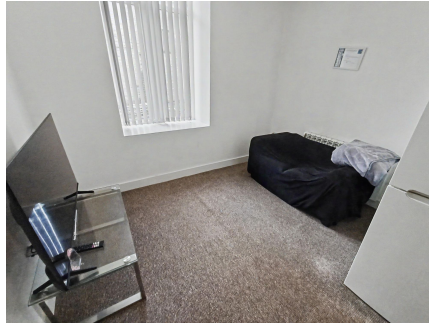
Floor plans

Approx Gross Internal Area
39 sq m / 418 sq ft



Floorplan

Whilst every attempt has been made to ensure the accuracy of the floor plan contained here, measurements of doors, windows, rooms and any other items are approximate and no responsibility is taken for any error, omission, or mis-statement. The measurements should not be relied upon for valuation, transaction and/or funding purposes. This plan is for illustrative purposes only and should be used as such by any prospective purchaser or tenant.



View full details at <https://www.moveplaces.co.uk/properties-for-sale/f97ad0df-f602-4ea1-bc65-fd5013da9ad7>