



Property details	
Beds	2
Baths	1
Parking spaces	1
Reception rooms	2
Gardens	1
Status	Freehold
Tenure	Sold STC
Energy efficiency rating	C
Energy efficiency	Current: 73.0, potential: 86.0
Environmental impact	Current: 70.0, potential: 84.0
Investment returns	
Current monthly rent	£750 pcm
Current rental yield	5.7%
Potential market value rent	£884 pcm
Potential rental yield	6.7%
Estimated monthly capital appreciation	£1126
Area capital appreciation rate	+6.5%
Market dynamics	
Market velocity	Slow moving
Average days on market	608
Monthly stock turnover	5%
5-year net area growth	+28.4%

Features

COUNCIL TAX BAND – A

EPC RATING – C (POTENTIAL - B)

Downstairs Family Bathroom

Vacant and Chain Free

Potential Rent £800 pcm

Private Rear Garden

In need of modernisation

Close to Cosely & Tipton Train Stations

On Street Parking (Unallocated)

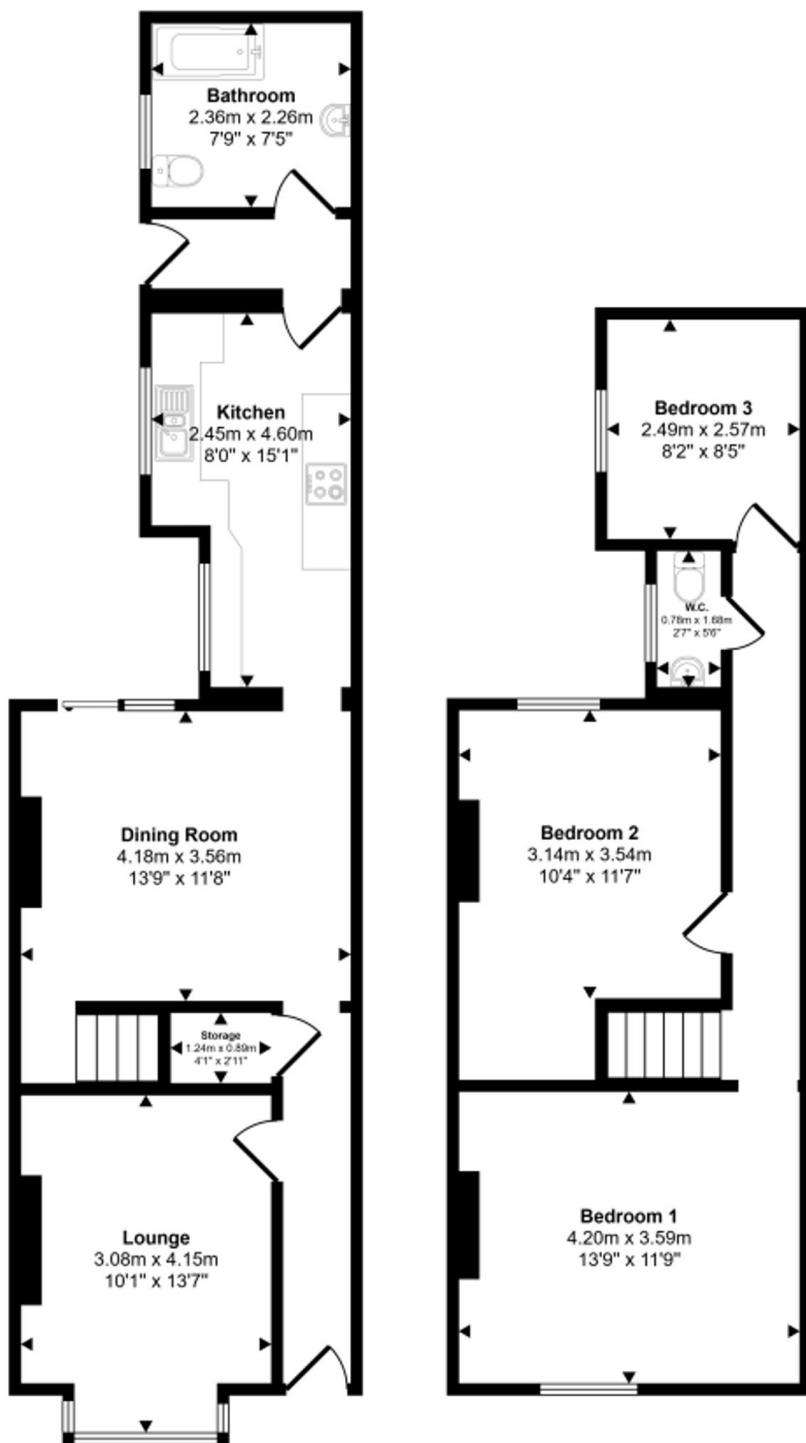
IDEAL FOR FIRST TIME BUYERS AND BUY-TO-LET INVESTORS

AWAITING NEW PHOTOS PRICED TO SELL! VACANT & CHAIN FREE Offers in excess of £150,000 Presenting an excellent opportunity for buyers seeking a project, this two bedroom mid terrace house is offered to the market vacant and chain free, with offers invited in excess of £150,000. Situated in a convenient residential location, the property benefits from a freehold tenure and currently falls within Coun...

View full description at <https://www.moveplaces.co.uk/properties-for-sale/fbb3acd5-2f16-4624-8686-cb8cd4fd3840>

Floor plans

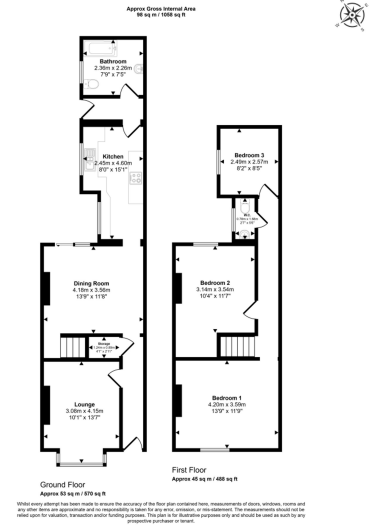
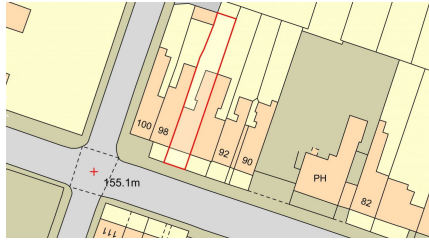
Approx Gross Internal Area
98 sq m / 1058 sq ft



Ground Floor
Approx 53 sq m / 570 sq ft

First Floor
Approx 45 sq m / 488 sq ft

Whilst every attempt has been made to ensure the accuracy of the floor plan contained here, measurements of doors, windows, rooms and any other items are approximate and no responsibility is taken for any error, omission, or mis-statement. The measurements should not be relied upon for valuation, transaction and/or funding purposes. This plan is for illustrative purposes only and should be used as such by any prospective purchaser or tenant.



View full details at <https://www.moveplaces.co.uk/properties-for-sale/fbb3acd5-2f16-4624-8686-cb8cd4fd3840>