



Property details	
Beds	2
Baths	1
Parking spaces	1
Reception rooms	1
Gardens	1
Status	Leasehold
Tenure	For Sale
Energy efficiency rating	
Energy efficiency	Current: , potential:
Environmental impact	Current: , potential:
Investment returns	
Current monthly rent	£720 pcm
Current rental yield	3.8%
Potential market value rent	£1159 pcm
Potential rental yield	6.1%
Estimated monthly capital appreciation	-£561
Area capital appreciation rate	-0.8%
Market dynamics	
Market velocity	Average turnover
Average days on market	45 days
Monthly stock turnover	35%
5-year net area growth	+0%

Features

POTENTIAL RENTAL INCOME - £1,100pcm

POTENTIAL YIELD - 10.6%

TENURE - Leasehold 63 Years Remaining

GROUND RENT - Zero

SERVICE CHARGE - Zero

COUNCIL TAX BAND - A

EPC RATING - C (POTENTIAL - C)

Communal Rear Yard & Parking to Rear (x 2 flats)

PRICED TO SELL - VACANT & CHAIN FREE

Ground Floor Conversion Flat

PRICED TO SELL - WITH VACANT POSSESSION TENURE - Leasehold LEASE LENGTH - 63 Years Remaining

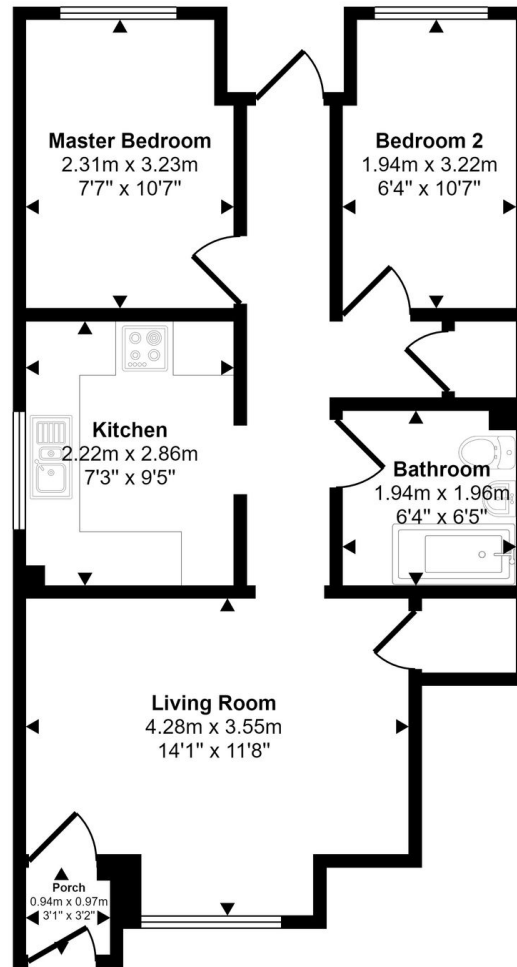
GROUND RENT - Zero SERVICE CHARGE - Zero COUNCIL TAX BAND - A EPC RATING - C (POTENTIAL - C)

<https://find-energy-certificate.service.gov.uk/energy-certificate/0280-0277-8714-5604-5100> We're pleased to be marketing this attractive, two-bedroom ground floor flat, located in the popular area of Portsmouth, wh...

View full description at <https://www.moveplaces.co.uk/properties-for-sale/fe8497ac-36f9-497a-b800-70d3427fc549>

Floor plans

Approx Gross Internal Area
50 sq m / 533 sq ft



Floorplan

Whilst every attempt has been made to ensure the accuracy of the floor plan contained here, measurements of doors, windows, rooms and any other items are approximate and no responsibility is taken for any error, omission, or mis-statement. The measurements should not be relied upon for valuation, transaction and/or funding purposes. This plan is for illustrative purposes only and should be used as such by any prospective purchaser or tenant.



View full details at <https://www.moveplaces.co.uk/properties-for-sale/fe8497ac-36f9-497a-b800-70d3427fc549>